



**DOME TECHNOLOGY™**

PROUD MEMBER OF THE NATIONAL STORM SHELTER ASSOCIATION



# STORMSHELTERS

PROTECTION • COST SAVINGS • FAST CONSTRUCTION • VERSATILITY • LONGEVITY



# WELL-ROUNDED THINKING.

Today more businesses, schools, and government agencies are partnering with Dome Technology to construct critical and demanding buildings. And it's no surprise why: Domes are stronger, more versatile, and more cost effective than conventional structures. If your community values out-of-the-box thinking and investing in the future, a dome is the smart choice.

"We will have a facility that is available at all times of the year. The fire department (will) have ready access to the safe shelters, and the domes will be stocked with generators and other supplies needed in an emergency."

Jim DeVisser  
Former Kingsville, Texas, interim fire chief



Kingsville Independent School District | Kingsville, Texas  
Storm shelters / Gymnasiums

Key benefits



Protection



Cost savings



Fast construction



Versatility



Longevity



# The ultimate in protection

When storm clouds gather, rest assured that your friends, neighbors, and perhaps even your children have a safe haven. Windborne debris, projectiles, and 250-mph wind speeds are no match for a dome engineered to combat weather events. There's no better place to seek shelter from the storm.

## Custom engineering features

- ICC 500 specifications
- FEMA 361 criteria
- Missile impact test (FEMA 32 and ICC 500, Protocol 4, Tornado)
- All-weather construction
- Type 1 (fire-resistant) construction
- IBC seismic criteria
- Nuclear Regulatory Commission guidelines for withstanding 482+ kph (300+ mph) winds (ASCE Paper 3269 and ASCE 7-10 codes)

The Wind Science & Engineering Center Debris Impact Test Facility at Texas Tech University conducted tests to determine Dome Technology domes' ability to withstand windborne debris. A design-level projectile was shot at the shell at more than 100 mph, which penetrated the outer weatherproofing membrane and insulation layer but splintered upon impact with the reinforced concrete dome. The testing was done in accordance with guidelines found in FEMA 320/361 and ICC-500 specifications.



Tom O'Connor, Jr. Athletic Center | Victoria, Texas  
Storm shelter / Gymnasium



Key benefits



Protection



Cost savings



Fast construction



Versatility



Longevity



"We typically see a two-fold savings in energy costs when comparing a dome to conventional construction. The first is the initial costs in HVAC equipment, which is reduced by 30 to 50 percent. The second is in your monthly bill for heating or cooling, which again can easily be 30 percent."



Daren Wheeler  
Dome Technology sales manager

## More bang for your buck

Because Dome Technology storm shelters cost less to build and operate, city and school officials can confidently share that tax dollars are being well spent. If your community values wise spending and investing in the future, a storm shelter from Dome Technology is the smart choice.

## Fast, efficient construction

- Domes are built with locally available concrete and reinforcing steel.
- The dome's double curvature requires fewer construction materials with significantly less waste.
- A dome can be built quickly; once the outer weatherproof membrane is in place, construction moves inside, so building continues regardless of the weather.



Del Mar College | Corpus Christi, Texas  
Storm shelter / FEMA command shelter

Key benefits



Protection



Cost savings



Fast construction



Versatility



Longevity



## Versatility comes standard

Distinguish your community with a building that looks different because it is different. Domes can be designed for any application—and they look good too, inside and out. Our storm shelters are finished with traditional materials outside, and the free-span interior can be reconfigured and redesigned at will, even if changes require removing and reinstalling walls. It's the ultimate in flexible square footage.

### Custom architectural features

- Low-profile, post-tension dome
- Integrated gutter system
- Flexibility in style and design
- An optional foyer can be built to enhance aesthetics and function
- Can be finished as a gymnasium, events center or performing-arts center
- Open floor plans allowing for flexibility in interior design
- Reliance on green technology—good for the environment and good for reducing operating costs
- Available features like low-VOC paints, grey-water recycling, LED lighting, solar lighting, and geo-thermal HVAC systems where applicable
- A waterproof membrane that guarantees complete protection for the entire reinforced concrete roof
- Elevated running track
- Flexibility in sizes from 3,000 to 80,000 square feet
- Relative ease in designing to FEMA 361 and ICC-500 specifications



"I would strongly recommend the dome concept. By using a dome, we are able to build a much larger facility on the budget that was provided."  
 Dr. Kevin Cooper  
 Webb City R-VII School District  
 assistant superintendent

Webb City High School | Webb City, Missouri  
 Storm shelter / Gymnasium



Key benefits



Protection



Cost savings



Fast construction



Versatility



Longevity



## Built to last

With 40 years of experience and more than 600 dome structures, Dome Technology is the industry leader in concrete dome construction. As the pioneer of this construction process, we continue to innovate, design, and build robust safe rooms that exceed FEMA 361 and ICC-500 standards, offering a turn key, free span solution. From 3,000, to 80,000 square feet, this structure proves to be an affordable, efficient and safe shelter for your kids and community.

Our team is made stronger with support from internal and external engineers who specialize in customized dome structures. When you select Dome Technology for your project, you also get the benefit of engineering expertise.

### Safety performance

- All project managers and superintendents trained in OSHA 30-hour construction course. All field employees trained in OSHA 10-hour construction course
- Continuous employee safety training program with thousands of invested hours
- Comprehensive quality-control program



“We’re on the Gulf Coast, so we are a hurricane-prone area. Our center becomes the command center (for the) few personnel that must stay until the eleventh hour. That’s its primary purpose; we just get to use it the other 99 percent of the time for events.”

Gretchen Scoggins  
Lumberton district coordinator  
of special programs and communication

Lumberton ISD Performing Arts Center  
| Lumberton, Texas  
Storm shelter / Event center



“Some people consider Dome Technology a construction company; however, we like to consider ourselves a protection company. Whether our structures are protecting grain, fertilizer, sugar, or our most valuable assets—our kids—Dome Technology engineers and builds to safeguard and protect your most valuable assets.”



Bradley Bateman  
Dome Technology CEO

Key benefits



Protection



Cost savings



Fast construction



Versatility



Longevity





City of La Feria | La Feria, Texas  
Storm shelter



Storm shelters, schools, community centers, churches, and other commercial buildings built by Dome Technology since 2000. For more information, visit [www.dometechnology.com/projects](http://www.dometechnology.com/projects)

## Don't take our word for it

Dome Technology storm shelters are the strongest and most versatile structures on the market. But don't take our word for it; contact our customers directly and ask about their experience with Dome Technology.



### Webb City High School Webb City, Missouri, USA

1 dome: 54.9m (180ft) wide x 7.9m (26ft) tall on a 9m (30ft) wall

School/Shelter

✓ Dr. Kevin Cooper, Webb City R-VII School District Asst. Superintendent for Business Operations  
kcooper@wcr7.org  
417-673-6006

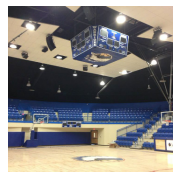


### Lumberton Performing Arts Center Lumberton, Texas, USA

1 dome: 54.9m (180ft) wide x 7.6m (25ft) tall on a 10.1m (33ft) wall

Fine arts center/Shelter

✓ Gretchen Scoggins, Lumberton ISD Coordinator of Special Programs and Communications  
409-923-7827  
glscoggins@lumberton.k12.tx.us



### Hammon High School Hammon, Oklahoma, USA

1 dome: 45.1m (148ft) wide x 6.4m (21ft) tall on a 6.7m (22ft) wall

Gymnasium/Shelter

✓ Gary Baker, Hammon School District Superintendent  
gbaker@hammon.k12.ok.us



### Bloomington Elementary Bloomington, Texas, USA

1 dome: 46.6m (153ft) wide x 6.7m (22ft) tall on a 4m (13ft) wall

Gymnasium/Shelter

✓ Jesse Garcia, Bloomington Elementary maintenance director  
361-220-0910



### Tom O'Conner Jr. Athletic Center Victoria, Texas, USA

1 dome: 50m (165.5ft) wide x 6.1m (20ft) tall on a 6.1m (20ft) wall

Gymnasium/Shelter

✓ Murray Carson, St. Joseph HS Director of Operations and Facilities  
361-573-2446 ext. 234

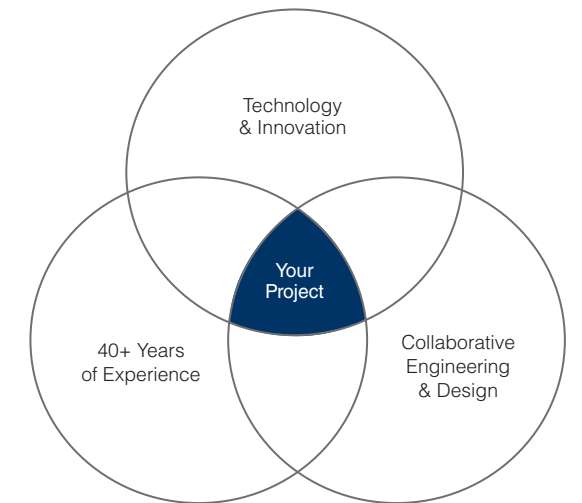
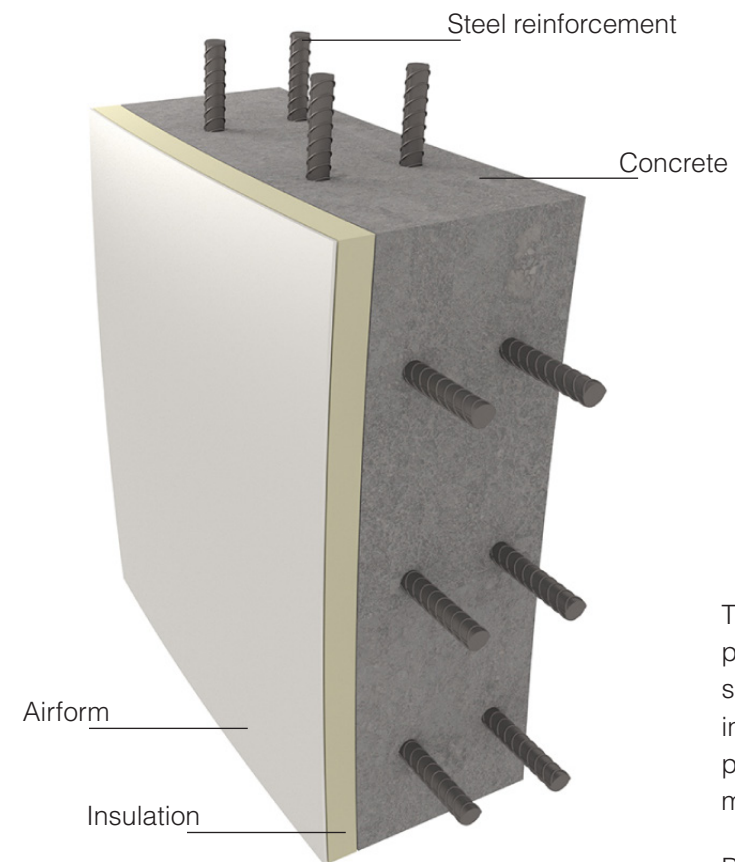


### Los Fresnos United Campus Los Fresnos, Texas, USA

1 dome: 49.4m (162ft) wide x 7.3m (24ft) tall on a 6.1m (20ft) wall

Gymnasium/Shelter

✓ Jennifer Stumbaugh, Los Fresnos United Principal  
jstumbaugh@lfcisd.net  
956-254-5250



## The source of our strength

The materials we use are key. The airform acts as an impermeable membrane that keeps moisture at bay. The insulation and concrete shell provide better climate control inside. Combined with steel reinforcement and nature's perfectly strong shape, the structure is undeniably robust, making it ideal for weathering any storm.

But the real secret lies in our team's expertise. With longtime leadership who pioneered the dome-building process, engineers who specialize in dome geometry and design, and crews who take pride in their craftsmanship, we provide the most dependable storm shelter available.



Concrete work performed by Dome Technology's ACI-certified nozzlemen





**DOME TECHNOLOGY™**

NATIONAL STORM SHELTER ASSOCIATION MEMBER

4946 N. 29th East  
Idaho Falls, ID 83401  
+1 208.529.0833  
[www.dometechnology.com](http://www.dometechnology.com)

© 2018 Dome Technology, LLC. All rights reserved.



[www.facebook.com/dometechnology](http://www.facebook.com/dometechnology)



[www.youtube.com/dometechnology](http://www.youtube.com/dometechnology)